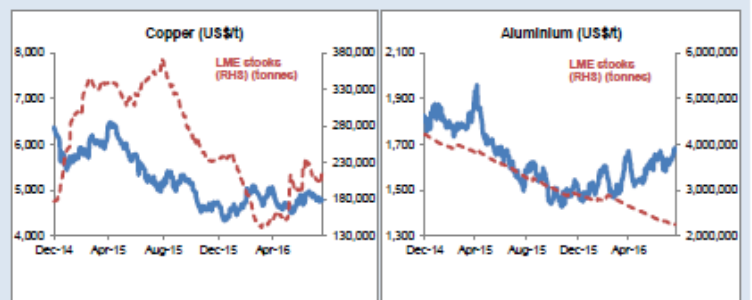
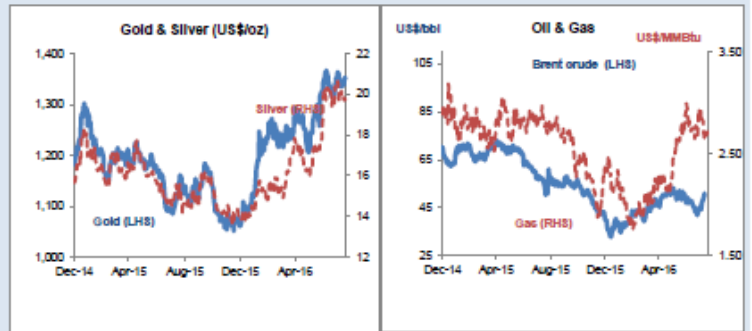


Daily Resources Overview

Commodity price movement

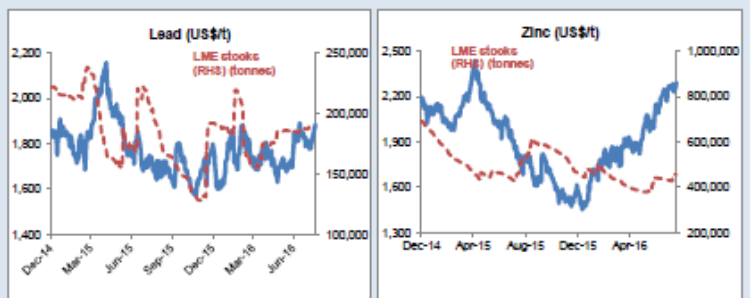
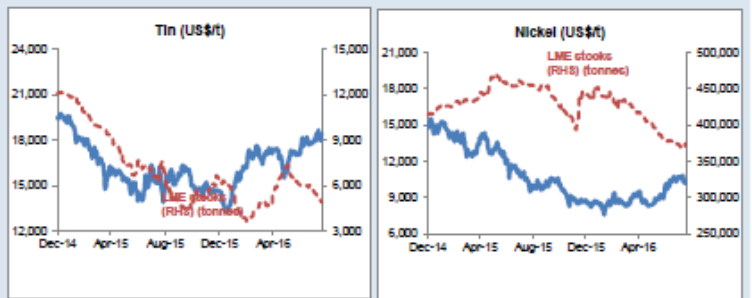
| Commodity | Price | 1D %ch | 1M %ch | 1Y %ch | YTD %ch |
|--------------------------------|--------|-------------|--------|--------|---------|
| Precious Metals (COMEX) | | | | | |
| Gold (US\$/oz) | 1,357 | 0.6 | 1.2 | 21.5 | 27.4 |
| Silver (US\$/oz) | 19.75 | 0.1 | -0.8 | 28.9 | 42.5 |
| Platinum (US\$/oz) | 1,135 | 0.2 | 3.4 | 11.3 | 26.5 |
| Industrial Metals (LME) | | | | | |
| Copper (US\$/t) | 4,793 | 0.7 | -2.6 | -4.8 | 1.9 |
| Aluminium (US\$/t) | 1,670 | -0.8 | 1.5 | 9.4 | 11.3 |
| Lead (US\$/t) | 1,884 | 0.8 | 2.1 | 12.1 | 4.8 |
| Zinc (US\$/t) | 2,294 | 1.1 | 3.8 | 30.4 | 44.0 |
| Tin (US\$/t) | 18,420 | 0.2 | 2.6 | 21.4 | 26.3 |
| Nickel (US\$/t) | 10,301 | 1.3 | -1.9 | -0.2 | 17.3 |
| Bulks | | | | | |
| Iron Ore (US\$/t) | 60.71 | -0.3 | 6.8 | 6.7 | 39.3 |
| Thermal Coal (US\$/t) | 61.80 | weekly data | -0.6 | -25.4 | -2.0 |
| Energy | | | | | |
| Brent Crude (US\$/bbl) | 51 | 2.2 | 7.4 | -9.6 | 18.1 |
| Natural Gas (US\$/MMBtu) | 2.74 | 1.7 | 0.7 | -1.0 | 16.0 |
| Uranium (US\$/lb) | 26.15 | 0.0 | 3.8 | -28.3 | -24.6 |
| Softs | | | | | |
| Wheat (US\$/bu) | 444 | 0.3 | -2.3 | -16.8 | -12.5 |
| Sugar (US\$/lb) | 20 | 1.3 | 3.1 | 60.7 | 36.1 |
| Corn (US\$/bu) | 342 | 0.7 | -5.8 | -14.4 | -10.7 |
| Soy (US\$/bu) | 1,015 | -0.1 | -4.9 | 13.9 | 14.9 |
| Cotton (US\$/lb) | 69 | 0.2 | -7.0 | 0.8 | 8.2 |
| Other | | | | | |
| CRB Comdty Index | 414 | 0.8 | -0.3 | 0.7 | 10.4 |

Friday 19 August 2016



Global resource share price movement

| Company Name | Sector | 1D %ch | 1M %ch | 1Y %ch | YTD %ch |
|------------------|-------------|--------|--------|--------|---------|
| Barrick Gold | Gold | 0.8 | -2.6 | 174.7 | 185.1 |
| Newmont | Gold | 1.0 | 6.7 | 153.3 | 147.0 |
| Goldcorp | Gold | 1.1 | -3.7 | 26.4 | 61.8 |
| Anglo Platinum | Platinum | 1.1 | 12.8 | 57.9 | 141.7 |
| Anglo American | Diversified | 1.7 | 5.8 | 18.6 | 193.9 |
| BHP Billiton PLC | Diversified | 2.8 | 5.2 | -17.1 | 16.8 |
| Rio Tinto PLC | Diversified | 1.2 | 0.1 | 2.2 | 24.5 |
| Teck Resources | Diversified | 2.0 | 13.4 | 151.4 | 294.9 |
| Glencore | Diversified | 1.9 | 5.3 | 14.5 | 116.8 |
| Vale | Iron Ore | -1.0 | 13.4 | 15.2 | 55.7 |
| Fortescue | Iron Ore | 3.7 | 17.0 | 144.2 | 154.0 |
| South32 | Diversified | 0.0 | 10.6 | 32.1 | 95.3 |
| China Shenhua | Coal | -3.2 | -4.8 | -1.9 | 18.1 |
| Freeport McMoRan | Copper | 1.9 | -6.9 | 23.3 | 80.6 |
| Antofagasta | Copper | 5.3 | 13.5 | 1.7 | 21.7 |
| Alcoa | Aluminium | 0.9 | -4.3 | 12.7 | 5.9 |
| Chinalco | Aluminium | -0.7 | 9.6 | 1.1 | 10.9 |
| Rusal | Aluminium | 0.0 | 2.6 | -19.4 | 17.3 |
| Norilsk Nickel | Nickel | -1.9 | 1.7 | 2.4 | 20.9 |
| Timah PT | Tin | 4.9 | -0.6 | 47.4 | 69.3 |
| Boliden | Zinc | 1.6 | 8.8 | 25.2 | 35.3 |
| Cameco | Uranium | -1.4 | -12.6 | -34.2 | -28.6 |
| Arcelor Mittal | Steel | 3.1 | 10.9 | -5.5 | 91.6 |



Commodity currency exchange rates (note: red = weakness against US\$)

| Cross-rate | Spot | 1D %ch | 1M %ch | 1Y %ch | YTD %ch |
|------------|-------|--------|--------|--------|---------|
| AUD/USD | 0.77 | 0.0 | 2.4 | 4.6 | 5.5 |
| USD/ZAR | 13.37 | 0.1 | 7.3 | -3.6 | 15.7 |
| USD/BRL | 3.24 | -1.0 | 0.4 | 7.0 | 22.3 |
| USD/CAD | 1.28 | 0.1 | 1.9 | 2.8 | 8.3 |
| USD/RUB | 63.65 | 0.0 | -0.2 | 4.7 | 13.9 |
| USD/CNY | 6.63 | 0.0 | 1.1 | -3.6 | -2.1 |

LME warehouse inventories

| Commodity | Tonnes | 1D %ch | 1M %ch | 1Y %ch | YTD %ch |
|-----------|-----------|--------|--------|--------|---------|
| Copper | 213,425 | 0.1 | -7.0 | -39.6 | -9.7 |
| Aluminium | 2,252,150 | 0.5 | -2.6 | -32.5 | -22.2 |
| Lead | 187,125 | 0.0 | 0.4 | -7.1 | -2.4 |
| Zinc | 467,050 | -0.1 | 4.3 | -9.1 | -1.6 |
| Tin | 4,895 | -0.5 | -18.0 | -22.1 | -20.3 |
| Nickel | 373,572 | 0.0 | -0.9 | -17.9 | -15.3 |

