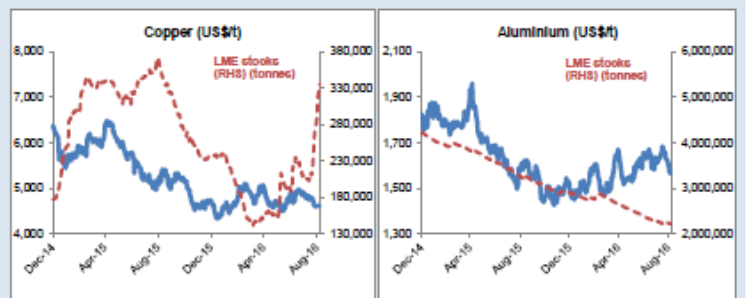
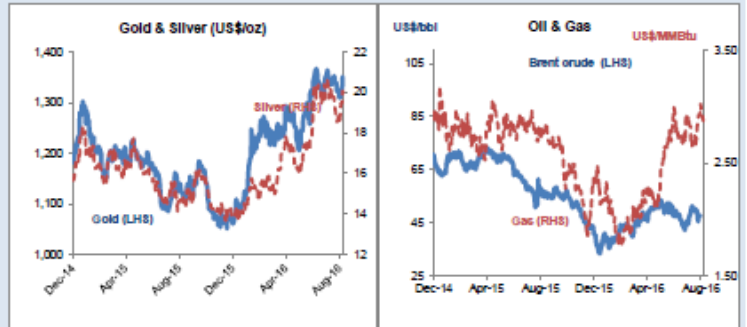


## Daily Resources Overview

### Commodity price movement

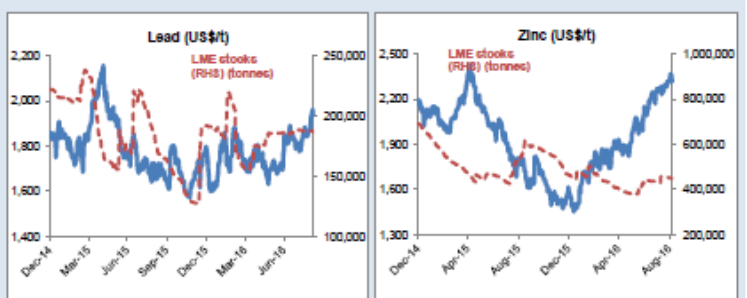
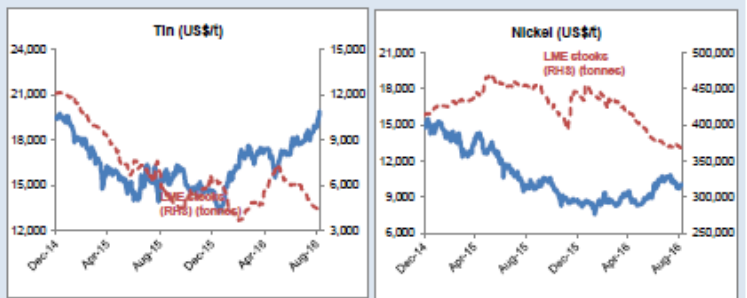
Commodity	Price	1D %ch	1M %ch	1Y %ch	YTD %ch
<b>Precious Metals (COMEX)</b>					
Gold (US\$/oz)	1,354	2.1	-0.2	19.6	26.2
Silver (US\$/oz)	20.14	4.0	1.8	38.3	44.7
Platinum (US\$/oz)	1,103	3.8	-4.1	11.2	23.1
<b>Industrial Metals (LME)</b>					
Copper (US\$/t)	4,603	-0.2	-3.7	-10.3	-2.2
Aluminium (US\$/t)	1,573	0.6	-3.7	-0.9	4.8
Lead (US\$/t)	1,938	-1.3	9.0	17.2	7.7
Zinc (US\$/t)	2,318	-1.8	2.4	30.3	45.5
Tin (US\$/t)	19,700	0.3	6.0	29.3	33.6
Nickel (US\$/t)	10,058	0.4	-5.8	1.4	14.6
<b>Bulks</b>					
Iron Ore (US\$/t)	59.16	-0.1	-2.6	4.7	35.8
Thermal Coal (US\$/t)	61.80	weekly data	-0.6	-25.4	-2.0
<b>Energy</b>					
Brent Crude (US\$/bbl)	47	-0.6	6.2	-16.8	8.2
Natural Gas (US\$/MMBtu)	2.87	-0.8	1.4	4.0	21.5
Uranium (US\$/lb)	25.70	0.0	-2.7	-31.3	-25.9
<b>Softs</b>					
Wheat (US\$/bu)	399	-0.2	-9.0	-21.9	-21.5
Sugar (US\$/lb)	20	0.2	-0.6	61.6	37.7
Com (US\$/bu)	329	0.0	-1.7	-15.4	-14.2
Soy (US\$/bu)	960	0.8	-1.5	11.6	8.7
Cotton (US\$/lb)	69	2.3	-9.9	9.5	9.1
<b>Other</b>					
CRB Comdty Index	406	0.2	-0.4	0.0	8.4

Wednesday 07 September 2016



### Global resource share price movement

Company Name	Sector	1D %ch	1M %ch	1Y %ch	YTD %ch
Barrick Gold	Gold	4.8	-10.4	197.0	158.0
Newmont	Gold	3.7	-5.5	167.5	133.5
Goldcorp	Gold	4.7	-3.9	25.6	45.2
Anglo Platinum	Platinum	2.6	-7.4	27.5	121.9
Anglo American	Diversified	1.6	-3.8	23.7	176.1
BHP Billiton PLC	Diversified	-0.7	2.6	-15.0	15.1
Rio Tinto PLC	Diversified	-0.2	-6.5	3.9	17.4
Teck Resources	Diversified	4.1	9.9	181.5	330.7
Glencore	Diversified	1.1	-4.5	52.9	102.5
Vale	Iron Ore	2.1	-1.2	4.8	50.8
Fortescue	Iron Ore	3.0	13.4	168.6	176.5
South32	Diversified	3.9	10.5	35.7	98.1
China Shenhua	Coal	1.9	0.5	20.0	21.2
Freeport McMoRan	Copper	2.3	-12.3	10.4	58.3
Antofagasta	Copper	-0.8	-2.1	-10.9	7.2
Alcoa	Aluminium	1.9	-1.7	8.7	4.6
Chinalco	Aluminium	2.1	5.8	16.7	14.4
Rusal	Aluminium	0.3	5.9	-13.0	21.5
Norilsk Nickel	Nickel	1.8	2.6	0.0	23.8
Timah PT	Tin	-1.2	-11.6	41.6	58.4
Boliden	Zinc	-1.3	-1.8	36.0	28.1
Cameco	Uranium	1.0	-2.6	-31.2	-28.5
Arcelor Mittal	Steel	-1.4	-4.5	9.3	82.3



### Commodity currency exchange rates (note: red = weakness against US\$)

Cross-rate	Spot	1D %ch	1M %ch	1Y %ch	YTD %ch
AUD/USD	0.77	0.0	0.4	11.0	5.5
USD/ZAR	13.99	-0.1	-3.0	-0.2	10.5
USD/BRL	3.20	2.7	-0.7	20.2	23.9
USD/CAD	1.28	0.0	2.4	3.6	7.7
USD/RUB	64.51	0.0	0.2	7.2	12.4
USD/CNY	6.67	0.1	-0.1	-4.6	-2.6

### LME warehouse inventories

Commodity	Tonnes	1D %ch	1M %ch	1Y %ch	YTD %ch
Copper	334,975	2.0	62.1	-5.9	41.8
Aluminium	2,212,275	-0.2	-2.3	-31.5	-23.6
Lead	187,000	-0.1	-0.7	5.9	-2.4
Zinc	449,925	-0.1	4.7	-14.6	-3.1
Tin	4,410	-1.1	-19.1	-24.4	-28.2
Nickel	367,896	0.0	-0.4	-18.9	-16.6

