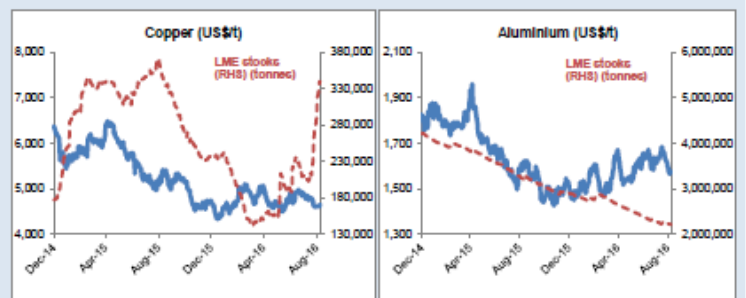
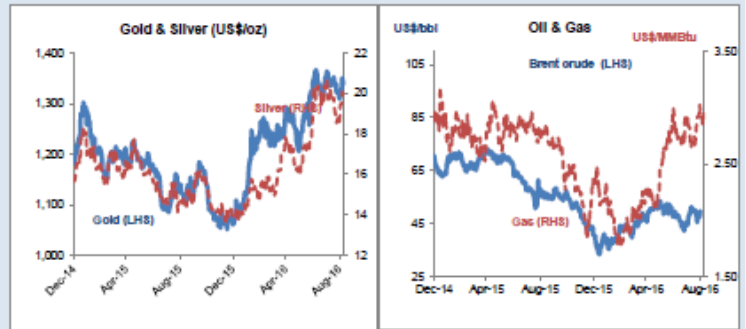


Daily Resources Overview

Commodity price movement

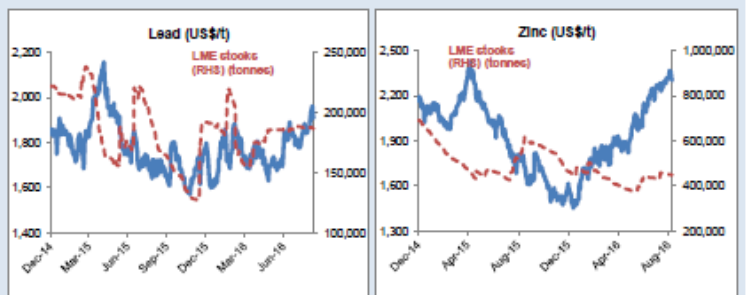
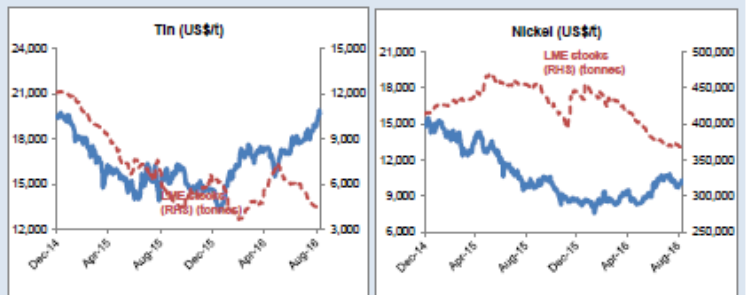
Commodity	Price	1D %ch	1M %ch	1Y %ch	YTD %ch
Precious Metals (COMEX)					
Gold (US\$/oz)	1,342	-0.6	0.5	19.8	26.7
Silver (US\$/oz)	19.70	0.1	-1.1	34.2	41.6
Platinum (US\$/oz)	1,088	0.3	-6.1	10.5	21.4
Industrial Metals (LME)					
Copper (US\$/t)	4,647	0.3	-3.2	-13.4	-1.3
Aluminium (US\$/t)	1,573	-0.2	-3.5	-2.2	4.8
Lead (US\$/t)	1,915	0.3	7.5	13.9	6.6
Zinc (US\$/t)	2,305	-0.5	1.3	27.5	44.7
Tin (US\$/t)	19,640	0.1	7.0	31.8	34.5
Nickel (US\$/t)	10,300	1.4	-4.0	3.3	17.3
Bulks					
Iron Ore (US\$/t)	58.14	-0.6	-5.6	1.3	33.4
Thermal Coal (US\$/t)	61.80	weekly data	-0.6	-25.4	-2.0
Energy					
Brent Crude (US\$/bbl)	50	3.4	8.5	-13.0	13.4
Natural Gas (US\$/MMBtu)	2.95	3.7	4.5	5.3	24.7
Uranium (US\$/lb)	25.70	0.0	-2.3	-31.3	-25.9
Softs					
Wheat (US\$/bu)	406	0.8	-7.5	-21.1	-20.0
Sugar (US\$/lb)	20	-0.3	-1.6	62.0	37.7
Corn (US\$/bu)	339	1.6	1.1	-13.9	-11.6
Soy (US\$/bu)	977	0.1	-0.8	12.3	10.6
Cotton (US\$/lb)	69	-0.4	-9.0	9.4	9.4
Other					
CRB Comdty Index	406	0.1	-0.7	0.5	8.5

Friday 09 September 2016



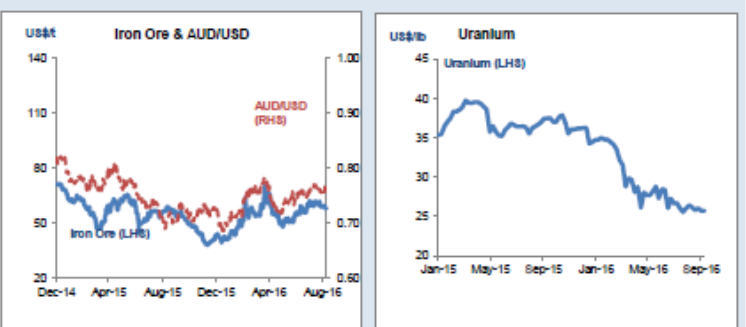
Global resource share price movement

Company Name	Sector	1D %ch	1M %ch	1Y %ch	YTD %ch
Barrick Gold	Gold	-2.5	-14.0	182.7	149.7
Newmont	Gold	-1.2	-6.9	160.6	131.2
Goldcorp	Gold	-0.8	-8.4	24.6	43.0
Anglo Platinum	Platinum	1.7	-7.8	33.0	125.3
Anglo American	Diversified	2.2	-1.9	22.0	188.8
BHP Billiton PLC	Diversified	1.7	-1.6	-17.8	13.4
Rio Tinto PLC	Diversified	1.5	-6.2	2.6	19.7
Teck Resources	Diversified	-0.8	1.5	153.5	310.1
Glencore	Diversified	-0.3	-4.9	38.7	105.2
Vale	Iron Ore	-1.5	-3.4	-1.0	48.4
Fortescue	Iron Ore	-2.0	4.5	139.7	161.5
South32	Diversified	-1.9	8.0	24.3	97.2
China Shenhua	Coal	3.8	0.0	9.4	22.7
Freeport McMoRan	Copper	0.2	-13.6	2.1	56.9
Antofagasta	Copper	0.0	-4.0	-16.4	8.7
Alcoa	Aluminium	-0.9	-3.2	4.1	2.5
Chinalco	Aluminium	1.4	5.4	9.3	14.8
Rusal	Aluminium	0.3	2.5	-13.1	23.2
Norilsk Nickel	Nickel	0.1	1.7	0.5	24.6
Timah PT	Tin	0.0	-10.6	32.2	58.4
Boliden	Zinc	-0.1	-2.7	28.4	29.4
Cameco	Uranium	-0.3	-5.6	-35.3	-29.3
Arcelor Mittal	Steel	-1.8	-5.2	8.9	84.2



Commodity currency exchange rates (note: red = weakness against US\$)

Cross-rate	Spot	1D %ch	1M %ch	1Y %ch	YTD %ch
AUD/USD	0.76	0.0	-0.4	8.9	4.9
USD/ZAR	14.13	0.0	-5.1	-2.4	9.5
USD/BRL	3.21	-0.6	-1.3	18.9	23.2
USD/CAD	1.29	0.1	1.5	2.6	7.1
USD/RUB	63.97	0.1	1.2	7.2	13.4
USD/CNY	6.67	-0.1	-0.1	-4.5	-2.6



LME warehouse inventories

Commodity	Tonnes	1D %ch	1M %ch	1Y %ch	YTD %ch
Copper	338,225	-0.4	65.0	-2.3	43.2
Aluminium	2,203,400	-0.3	-2.5	-31.4	-23.9
Lead	186,700	0.1	-0.8	8.4	-2.6
Zinc	449,750	0.0	4.7	-18.7	-3.2
Tin	4,390	0.0	-16.7	-23.5	-28.5
Nickel	367,854	0.0	-0.4	-18.5	-18.6