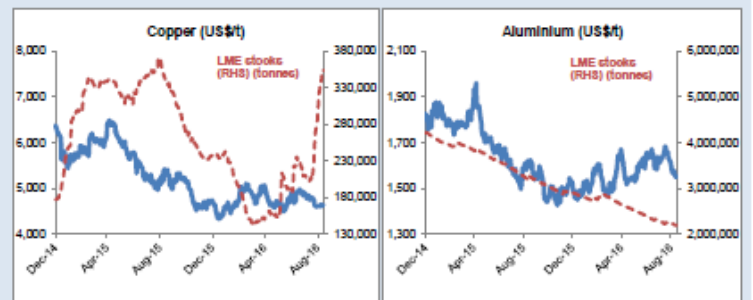
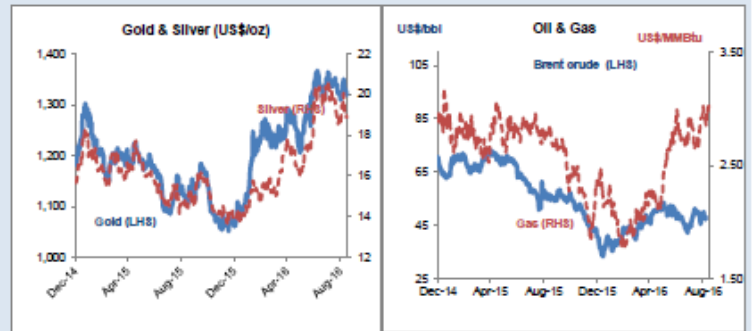


Daily Resources Overview

Wednesday 14 September 2016

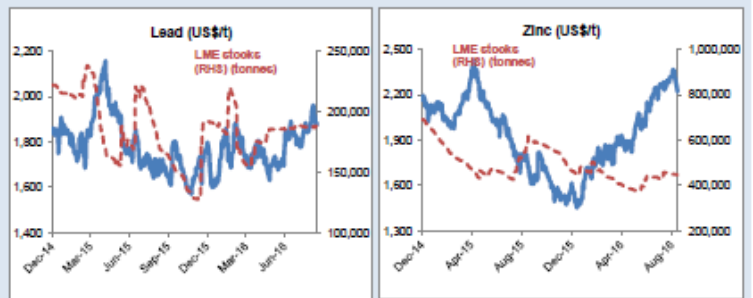
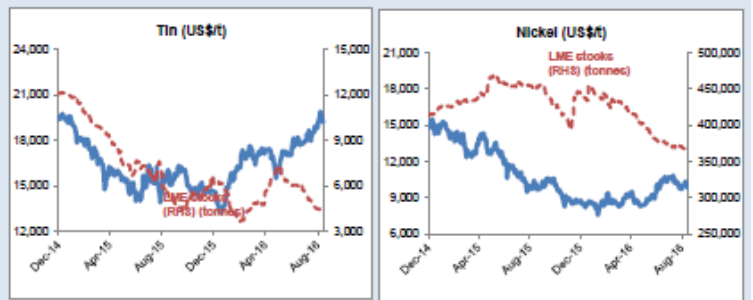
Commodity price movement

Commodity	Price	1D %ch	1M %ch	1Y %ch	YTD %ch
Precious Metals (COMEX)					
Gold (US\$/oz)	1,324	-0.1	-2.1	20.3	24.9
Silver (US\$/oz)	18.93	-0.3	-4.3	30.6	36.1
Platinum (US\$/oz)	1,036	-0.7	-7.8	8.5	16.0
Industrial Metals (LME)					
Copper (US\$/t)	4,633	0.1	-2.4	-14.0	-1.5
Aluminium (US\$/t)	1,548	-0.1	-5.8	-4.5	3.2
Lead (US\$/t)	1,884	0.6	3.0	10.9	4.8
Zinc (US\$/t)	2,221	-1.3	-0.5	23.1	39.5
Tin (US\$/t)	19,083	0.0	4.7	22.7	30.9
Nickel (US\$/t)	9,809	-2.2	-4.4	-4.5	11.7
Bulks					
Iron Ore (US\$/t)	56.09	-2.9	-7.1	-5.0	28.7
Thermal Coal (US\$/t)	61.80	weekly data	-0.6	-25.4	-2.0
Energy					
Brent Crude (US\$/bbl)	47	-2.4	-0.2	-16.0	7.8
Natural Gas (US\$/MMBtu)	3.03	0.3	12.9	8.6	28.0
Uranium (US\$/lb)	25.45	0.0	-2.7	-32.0	-26.7
Softs					
Wheat (US\$/bu)	401	-2.0	-8.9	-23.7	-21.0
Sugar (US\$/lb)	21	0.5	3.8	61.1	38.8
Corn (US\$/bu)	330	-2.8	-0.9	-19.5	-13.8
Soy (US\$/bu)	944	-2.1	-3.8	9.0	6.9
Cotton (US\$/lb)	67	0.3	-3.8	4.9	6.2
Other					
CRB Comdty Index	401	-0.7	-2.3	-1.4	7.1



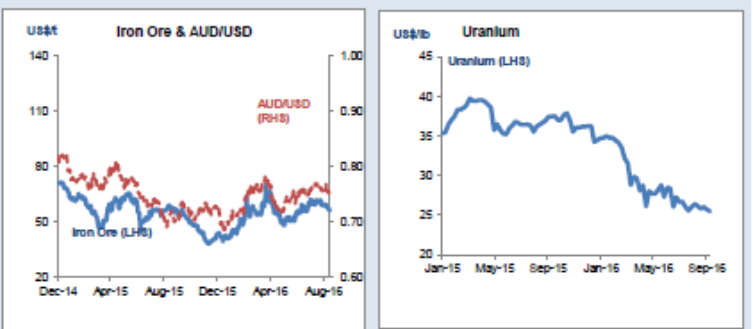
Global resource share price movement

Company Name	Sector	1D %ch	1M %ch	1Y %ch	YTD %ch
Barrick Gold	Gold	-2.7	-20.5	172.3	134.3
Newmont	Gold	-3.3	-13.6	140.3	116.9
Goldcorp	Gold	-4.1	-16.6	24.6	36.2
Anglo Platinum	Platinum	-0.7	-14.4	35.2	117.2
Anglo American	Diversified	-4.4	-8.5	9.1	161.7
BHP Billiton PLC	Diversified	-2.3	-3.3	-15.8	12.0
Rio Tinto PLC	Diversified	-1.6	-6.3	-5.3	14.0
Teck Resources	Diversified	-2.2	4.1	144.8	298.3
Glencore	Diversified	-2.1	-9.7	32.3	95.7
Vale	Iron Ore	-6.9	-10.5	-11.8	34.8
Fortescue	Iron Ore	0.9	3.3	131.2	153.5
South32	Diversified	0.0	6.5	26.9	99.1
China Shenhua	Coal	-0.4	-5.0	12.4	17.9
Freeport McMoRan	Copper	-8.4	-14.1	-11.0	49.9
Antofagasta	Copper	-1.9	-6.5	-20.9	2.4
Alcoa	Aluminium	-2.7	-8.4	-1.3	-3.5
Chinalco	Aluminium	-0.4	-1.1	5.3	8.2
Rusal	Aluminium	0.0	1.4	-19.4	19.0
Norilsk Nickel	Nickel	0.5	-0.7	-2.7	22.1
Timah PT	Tin	-5.0	-11.1	24.6	50.5
Boliden	Zinc	-1.1	-6.7	24.4	25.5
Cameco	Uranium	-3.4	-10.0	-37.2	-33.3
Arcelor Mittal	Steel	-3.8	-9.6	3.4	67.0



Commodity currency exchange rates (note: red = weakness against US\$)

Cross-rate	Spot	1D %ch	1M %ch	1Y %ch	YTD %ch
AUD/USD	0.75	0.0	-2.7	4.6	2.4
USD/ZAR	14.42	-0.2	-7.8	-6.5	7.2
USD/BRL	3.31	-2.0	-3.9	15.1	19.5
USD/CAD	1.32	0.1	-1.9	0.7	5.1
USD/RUB	65.52	-0.3	-2.3	3.1	10.7
USD/CNY	6.68	0.0	-0.6	-4.7	-2.8



LME warehouse inventories

Commodity	Tonnes	1D %ch	1M %ch	1Y %ch	YTD %ch
Copper	353,375	-0.2	74.6	3.3	49.6
Aluminium	2,188,250	-0.1	-2.0	-31.3	-24.4
Lead	187,850	0.0	0.2	11.4	-2.0
Zinc	447,800	0.0	-2.3	-21.7	-3.6
Tin	4,215	0.0	-16.8	-23.9	-31.4
Nickel	367,728	0.0	-0.4	-17.9	-16.7