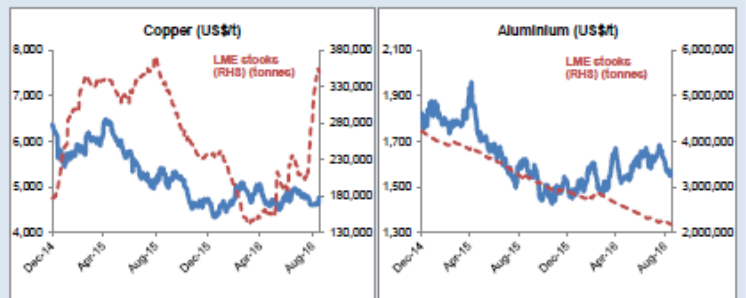
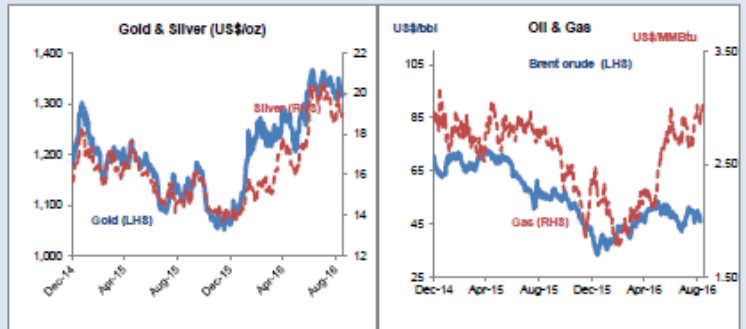


Daily Resources Overview

Commodity price movement

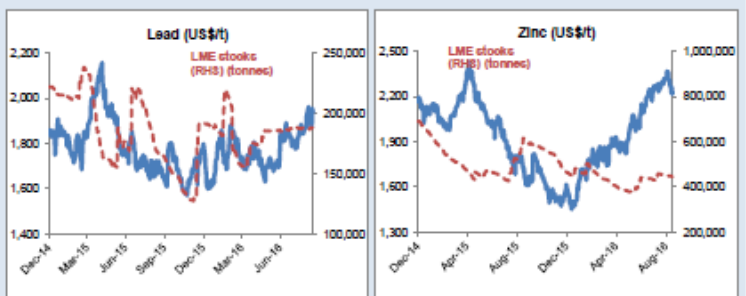
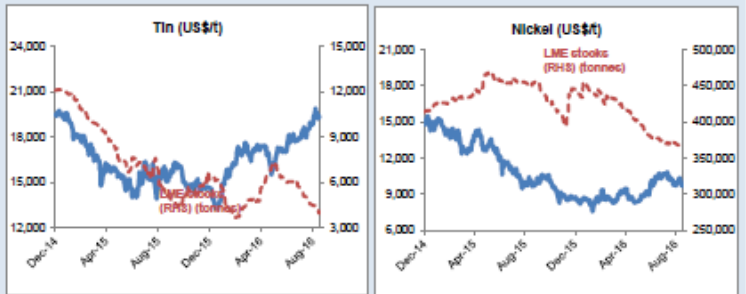
Commodity	Price	1D %ch	1M %ch	1Y %ch	YTD %ch
Precious Metals (COMEX)					
Gold (US\$/oz)	1,318	-0.6	-2.1	18.5	23.7
Silver (US\$/oz)	19.04	-0.1	-4.0	27.4	37.1
Platinum (US\$/oz)	1,034	-0.7	-7.4	6.4	15.9
Industrial Metals (LME)					
Copper (US\$/t)	4,765	0.2	0.1	-11.1	1.2
Aluminium (US\$/t)	1,559	-0.7	-6.4	-2.3	3.9
Lead (US\$/t)	1,942	-0.6	4.5	15.6	8.1
Zinc (US\$/t)	2,217	-2.0	-1.9	29.0	39.2
Tin (US\$/t)	19,062	-0.8	4.4	22.3	30.8
Nickel (US\$/t)	9,663	-1.3	-7.7	-4.0	10.1
Bulks					
Iron Ore (US\$/t)	55.97	0.0	-7.1	-2.3	28.5
Thermal Coal (US\$/t)	61.80	weekly data	-0.6	-25.4	-2.0
Energy					
Brent Crude (US\$/bbl)	46	1.1	-4.6	-15.5	5.9
Natural Gas (US\$/MMBtu)	3.03	0.6	13.3	7.1	28.2
Uranium (US\$/lb)	25.30	-0.6	-3.3	-32.4	-27.1
Softs					
Wheat (US\$/bu)	400	-0.9	-8.8	-25.0	-21.3
Sugar (US\$/lb)	21	2.1	3.5	64.2	40.1
Corn (US\$/bu)	330	-0.5	-2.1	-19.7	-13.8
Soy (US\$/bu)	951	0.8	-5.8	7.7	7.7
Cotton (US\$/lb)	68	0.4	0.4	8.9	8.1
Other					
CRB Comdty Index	400	-0.3	-2.6	-1.7	6.8

Friday 16 September 2016



Global resource share price movement

Company Name	Sector	1D %ch	1M %ch	1Y %ch	YTD %ch
Barrick Gold	Gold	2.7	-17.9	182.4	139.2
Newmont	Gold	1.6	-12.7	145.5	117.9
Goldcorp	Gold	0.3	-16.1	25.7	36.7
Anglo Platinum	Platinum	-2.9	-15.1	28.1	107.2
Anglo American	Diversified	1.0	-7.0	10.4	171.0
BHP Billiton PLC	Diversified	2.1	-0.9	-16.3	12.4
Rio Tinto PLC	Diversified	0.9	-5.7	-3.8	16.0
Teck Resources	Diversified	5.3	14.9	181.8	349.1
Glencore	Diversified	0.9	-5.2	42.9	102.3
Vale	Iron Ore	0.1	-11.1	-4.5	38.0
Fortescue	Iron Ore	0.9	4.0	129.3	151.3
South32	Diversified	3.9	10.9	42.7	110.3
China Shenhua	Coal	-0.6	-5.6	11.5	16.3
Freeport McMoRan	Copper	-0.2	-19.6	-13.4	44.5
Antofagasta	Copper	0.2	-4.8	-19.2	4.3
Alcoa	Aluminium	0.9	-10.0	-1.7	-4.1
Chinalco	Aluminium	-1.1	-2.8	3.4	7.8
Rusal	Aluminium	2.9	2.9	-18.0	21.1
Norilsk Nickel	Nickel	-1.3	-5.7	-8.6	18.5
Timah PT	Tin	1.3	-7.4	24.8	49.5
Boliden	Zinc	1.3	-4.3	30.6	28.3
Cameco	Uranium	1.7	-8.6	-36.1	-31.8
Arcelor Mittal	Steel	0.8	-10.6	3.7	66.2



Commodity currency exchange rates (note: red = weakness against US\$)

Cross-rate	Spot	1D %ch	1M %ch	1Y %ch	YTD %ch
AUD/USD	0.75	0.0	-2.3	4.4	3.1
USD/ZAR	14.25	0.0	-5.8	-6.9	8.6
USD/BRL	3.30	1.3	-3.5	16.9	19.9
USD/CAD	1.32	0.1	-2.2	0.1	5.2
USD/RUB	64.81	-0.1	-1.5	0.9	11.9
USD/CNY	6.67	0.1	-0.5	-4.6	-2.7

LME warehouse inventories

Commodity	Tonnes	1D %ch	1M %ch	1Y %ch	YTD %ch
Copper	349,225	-0.6	68.6	3.5	47.8
Aluminium	2,172,975	-0.3	-2.3	-33.4	-25.0
Lead	187,850	0.0	0.3	12.6	-2.0
Zinc	445,575	-0.2	-2.8	-27.8	-4.1
Tin	3,930	-0.9	-21.9	-23.0	-36.0
Nickel	367,806	0.0	-0.3	-17.9	-16.7

