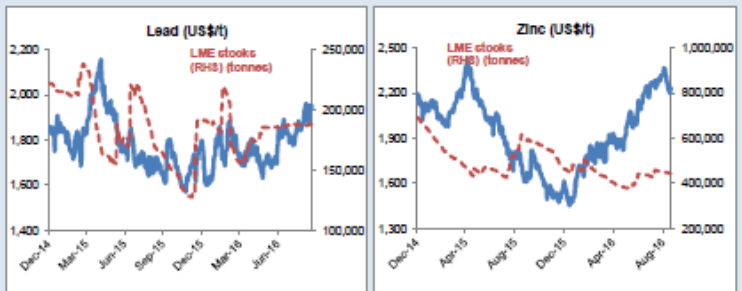
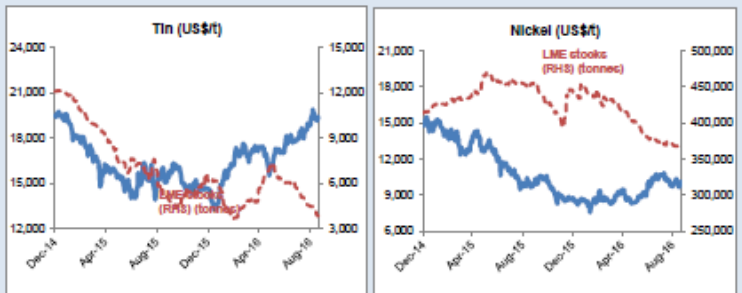
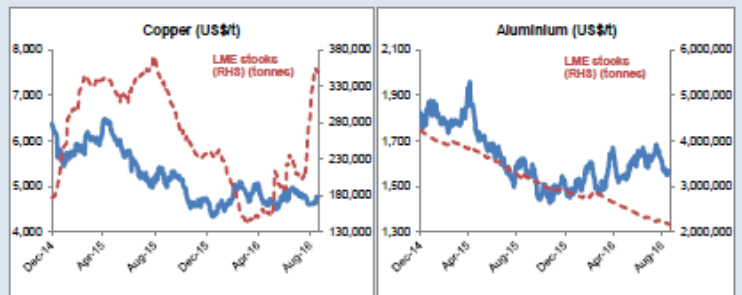
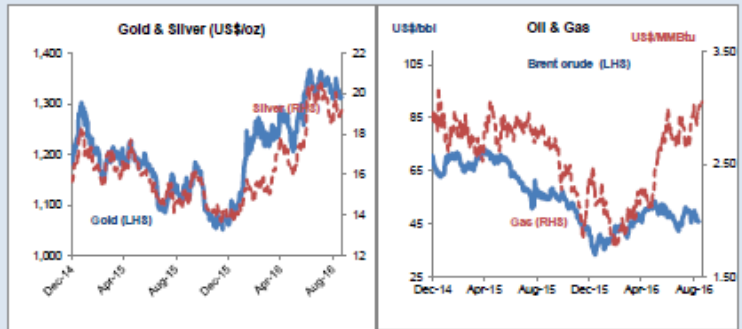


Daily Resources Overview

Commodity price movement

Commodity	Price	1D %ch	1M %ch	1Y %ch	YTD %ch
Precious Metals (COMEX)					
Gold (US\$/oz)	1,318	0.6	-2.3	15.2	24.0
Silver (US\$/oz)	19.29	2.3	-0.7	26.3	38.3
Platinum (US\$/oz)	1,024	0.6	-8.3	4.2	14.4
Industrial Metals (LME)					
Copper (US\$/t)	4,753	-0.4	-0.7	-9.8	1.0
Aluminium (US\$/t)	1,569	0.4	-5.2	-2.9	4.5
Lead (US\$/t)	1,952	0.8	4.3	16.0	8.6
Zinc (US\$/t)	2,237	1.6	-2.2	33.7	40.4
Tin (US\$/t)	19,351	1.3	4.4	27.5	32.9
Nickel (US\$/t)	10,102	4.4	-2.0	4.7	15.1
Bulks					
Iron Ore (US\$/t)	56.68	-0.5	-8.7	-3.5	27.8
Thermal Coal (US\$/t)	61.80	weekly data	-0.6	-25.4	-2.0
Energy					
Brent Crude (US\$/bbl)	46	0.3	-10.3	-15.5	4.8
Natural Gas (US\$/MMBtu)	3.05	-0.7	14.9	12.6	28.8
Uranium (US\$/lb)	24.95	-1.4	-3.3	-33.5	-28.1
Softs					
Wheat (US\$/bu)	404	0.2	-9.2	-23.0	-20.4
Sugar (US\$/lb)	23	1.2	12.2	83.3	50.7
Corn (US\$/bu)	337	0.1	-1.9	-18.3	-11.9
Soy (US\$/bu)	973	0.7	-3.2	11.8	10.2
Cotton (US\$/lb)	69	1.8	2.1	15.3	9.0
Other					
CRB Comdty Index	400	0.2	-2.4	-1.4	6.9

Tuesday 20 September 2016



Global resource share price movement

Company Name	Sector	1D %ch	1M %ch	1Y %ch	YTD %ch
Barrick Gold	Gold	-0.9	-16.6	154.7	132.9
Newmont	Gold	0.4	-13.0	126.3	113.6
Goldcorp	Gold	0.8	-14.4	16.0	35.7
Anglo Platinum	Platinum	3.3	-12.4	31.2	106.6
Anglo American	Diversified	5.7	-1.0	19.6	187.5
BHP Billiton PLC	Diversified	3.7	-5.5	-17.8	12.6
Rio Tinto PLC	Diversified	3.5	-3.6	2.6	19.2
Teck Resources	Diversified	-1.6	16.7	192.1	344.2
Glencore	Diversified	6.2	4.2	56.0	117.2
Vale	Iron Ore	2.2	-11.9	-9.8	39.0
Fortescue	Iron Ore	2.7	-0.8	137.4	161.5
South32	Diversified	1.8	13.7	50.6	117.8
China Shenhua	Coal	1.6	4.5	12.7	18.1
Freeport McMoRan	Copper	0.7	-16.4	-8.0	47.9
Antofagasta	Copper	1.8	-11.3	-13.6	6.6
Alcoa	Aluminium	-0.8	-8.9	-6.1	-5.2
Chinalco	Aluminium	1.4	-1.1	5.2	9.3
Rusal	Aluminium	-3.1	-0.4	-21.7	17.3
Norilsk Nickel	Nickel	1.2	-3.2	-9.8	19.9
Timah PT	Tin	-0.7	-12.9	20.2	47.5
Boliden	Zinc	1.7	-2.1	35.0	29.3
Cameco	Uranium	-0.4	-5.4	-34.5	-32.4
Arcelor Mittal	Steel	3.6	-11.1	10.7	68.4

Commodity currency exchange rates (note: red = weakness against US\$)

Cross-rate	Spot	1D %ch	1M %ch	1Y %ch	YTD %ch
AUD/USD	0.75	0.0	-1.2	5.7	3.4
USD/ZAR	14.02	0.0	-3.1	-3.9	10.4
USD/BRL	3.27	-0.3	-2.1	21.8	21.0
USD/CAD	1.32	0.0	-1.9	0.4	4.8
USD/RUB	64.67	0.0	0.2	2.1	12.1
USD/CNY	6.67	0.1	-0.2	-4.5	-2.6

LME warehouse inventories

Commodity	Tonnes	1D %ch	1M %ch	1Y %ch	YTD %ch
Copper	349,625	0.2	66.0	4.3	48.0
Aluminium	2,161,475	-0.3	-3.7	-33.1	-25.4
Lead	188,150	0.2	0.6	14.0	-1.8
Zinc	444,400	0.0	-2.5	-27.0	-4.3
Tin	3,825	-0.3	-19.0	-25.6	-37.7
Nickel	368,858	0.0	-1.8	-19.0	-16.9

