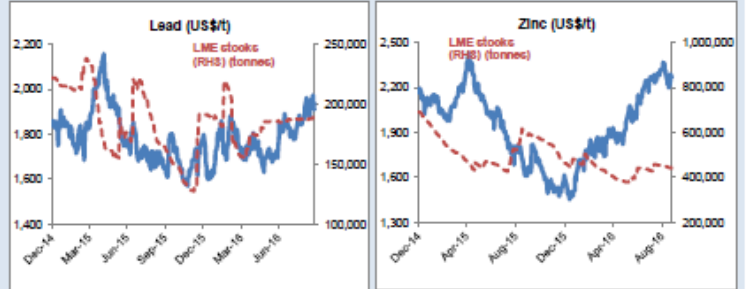
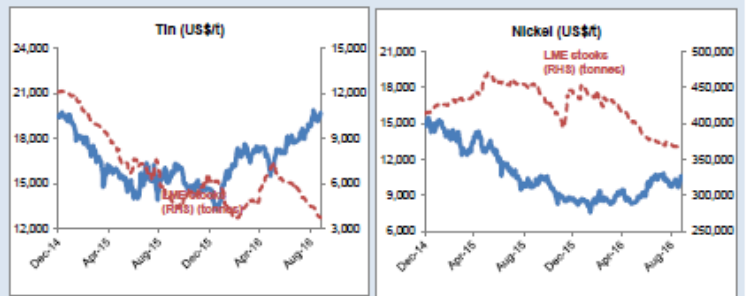
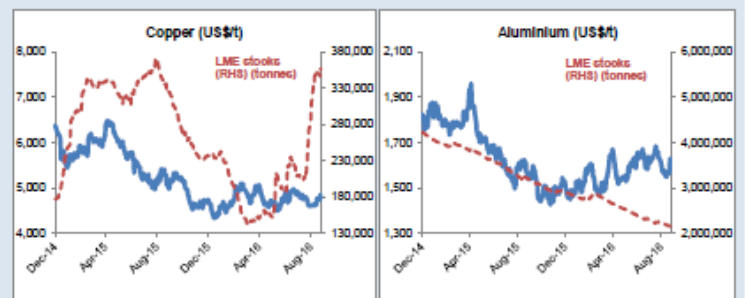
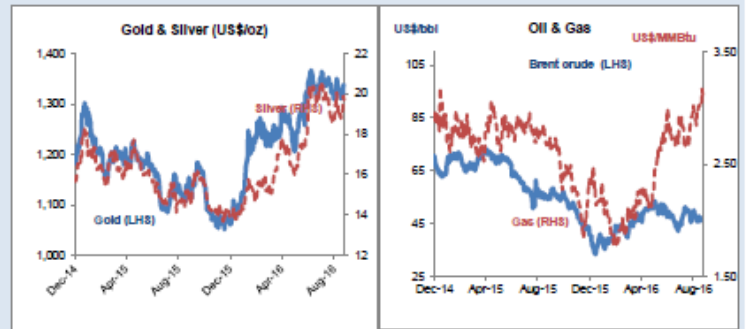


Daily Resources Overview

Commodity price movement

Commodity	Price	1D %ch	1M %ch	1Y %ch	YTD %ch
Precious Metals (COMEX)					
Gold (US\$/oz)	1,342	-0.2	-0.3	18.3	26.3
Silver (US\$/oz)	19.78	-0.2	4.6	33.1	42.0
Platinum (US\$/oz)	1,061	-0.5	-4.6	13.1	18.0
Industrial Metals (LME)					
Copper (US\$/t)	4,835	0.0	3.0	-4.7	2.7
Aluminium (US\$/t)	1,627	0.2	-1.7	4.1	8.6
Lead (US\$/t)	1,941	-1.6	3.2	13.1	6.2
Zinc (US\$/t)	2,284	-0.8	-1.7	38.7	42.3
Tin (US\$/t)	19,496	0.8	5.1	31.6	35.0
Nickel (US\$/t)	10,616	0.0	3.9	9.2	20.9
Bulks					
Iron Ore (US\$/t)	56.79	0.8	-8.0	2.7	30.3
Thermal Coal (US\$/t)	61.80	weekly data	-0.6	-25.4	-2.0
Energy					
Brent Crude (US\$/bbl)	46	-3.7	-8.8	-16.1	4.8
Natural Gas (US\$/MMBtu)	3.08	-0.7	9.1	15.6	30.3
Uranium (US\$/lb)	24.45	0.0	-5.8	-34.8	-29.5
Softs					
Wheat (US\$/bu)	405	-0.2	-5.3	-25.7	-20.2
Sugar (US\$/lb)	23	0.1	7.3	87.4	50.3
Corn (US\$/bu)	337	-0.1	-0.2	-17.4	-12.1
Soy (US\$/bu)	955	-2.2	-5.8	9.8	8.2
Cotton (US\$/lb)	69	-2.9	1.4	17.7	9.2
Other					
CRB Comdty Index	403	-0.1	-2.1	-0.6	7.6

Monday 26 September 2016



Global resource share price movement

Company Name	Sector	1D %ch	1M %ch	1Y %ch	YTD %ch
Barrick Gold	Gold	-2.3	-0.9	175.6	145.4
Newmont	Gold	-3.0	-1.5	138.5	119.9
Goldcorp	Gold	-2.5	3.7	24.6	44.1
Anglo Platinum	Platinum	-0.1	-8.6	51.4	106.9
Anglo American	Diversified	3.3	13.3	54.7	217.6
BHP Billiton PLC	Diversified	0.3	3.1	-8.1	20.5
Rio Tinto PLC	Diversified	1.2	5.4	13.6	27.3
Teck Resources	Diversified	0.0	12.8	267.3	348.5
Glenore	Diversified	1.7	18.0	117.5	133.8
Vale	Iron Ore	0.0	-0.5	7.7	49.6
Fortescue	Iron Ore	-3.9	1.6	175.6	165.2
South32	Diversified	-0.4	20.3	69.6	125.4
China Shenhua	Coal	-1.4	11.4	26.1	25.5
Freeport McMoRan	Copper	-3.2	-4.1	8.5	57.0
Antofagasta	Copper	-0.3	-2.1	2.0	10.0
Alcoa	Aluminium	-0.2	-3.2	7.6	-1.1
Chinalco	Aluminium	-0.3	0.0	16.3	11.3
Rusal	Aluminium	-0.8	-11.8	-21.3	7.6
Norilsk Nickel	Nickel	0.1	2.4	7.8	23.4
Timah PT	Tin	0.6	-3.6	23.3	57.4
Boliden	Zinc	-0.1	5.9	51.8	36.6
Cameco	Uranium	0.0	-4.5	-29.6	-31.9
Arcelor Mittal	Steel	2.5	-1.3	40.8	81.9

Commodity currency exchange rates (note: red = weakness against US\$)

Cross-rate	Spot	1D %ch	1M %ch	1Y %ch	YTD %ch
AUD/USD	0.76	-0.3	0.1	8.5	4.6
USD/ZAR	13.72	-0.5	3.6	1.4	12.7
USD/BRL	3.24	-0.7	-0.3	28.8	22.1
USDCAD	1.32	-0.9	-1.8	1.4	5.2
USD/RUB	64.08	-0.7	0.8	4.1	13.2
USD/CNY	6.67	-0.1	-0.4	-4.3	-2.6

LME warehouse inventories

Commodity	Tonnes	1D %ch	1M %ch	1Y %ch	YTD %ch
Copper	356,875	3.1	48.7	9.1	51.1
Aluminium	2,146,725	-0.3	-3.9	-33.1	-25.9
Lead	191,000	0.0	1.8	15.9	-0.3
Zinc	442,650	-0.3	-2.7	-26.1	-4.7
Tin	3,715	-0.8	-19.8	-27.5	-39.5
Nickel	383,216	-0.5	-2.8	-20.0	-17.7

