

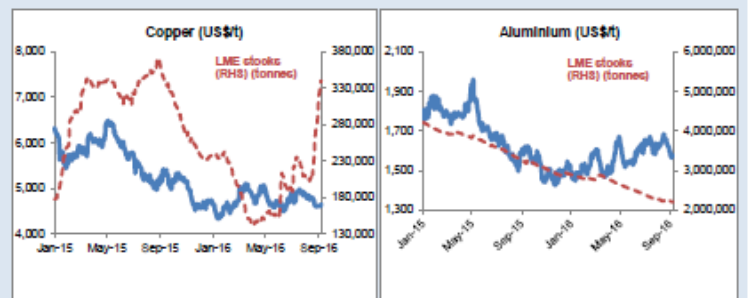
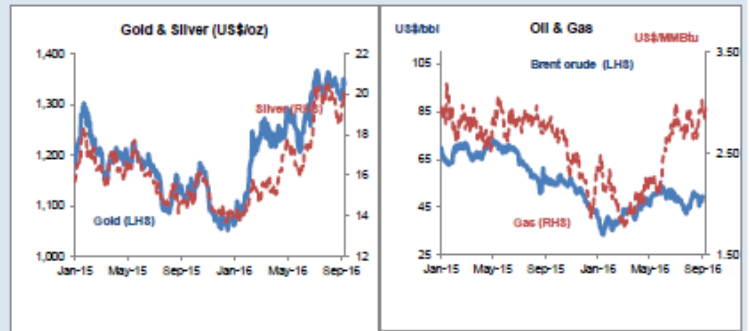


Daily Resources Overview

Commodity price movement

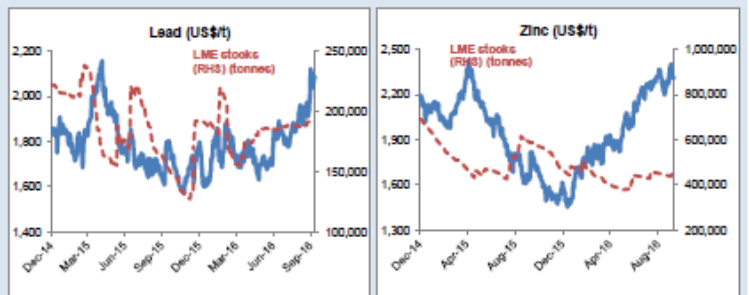
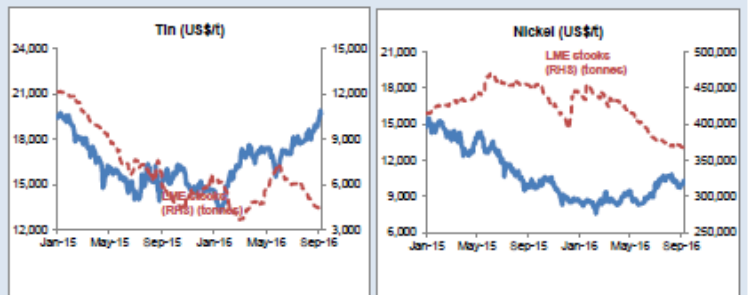
Commodity	Price	1D %ch	1M %ch	1Y %ch	YTD %ch
Precious Metals (COMEX)					
Gold (US\$/oz)	1,262	0.8	-5.4	9.4	18.8
Silver (US\$/oz)	17.68	1.7	-7.3	11.4	27.4
Platinum (US\$/oz)	967	0.4	-9.2	-1.8	8.0
Industrial Metals (LME)					
Copper (US\$/t)	4,829	1.5	4.7	-9.1	2.6
Aluminium (US\$/t)	1,687	1.0	8.1	5.6	12.4
Lead (US\$/t)	2,087	1.1	10.3	17.8	16.2
Zinc (US\$/t)	2,313	0.0	1.4	27.3	45.2
Tin (US\$/t)	20,175	0.5	4.1	24.4	38.1
Nickel (US\$/t)	10,474	3.2	1.4	0.1	19.3
Bulks					
Iron Ore (US\$/t)	56.65	1.4	-2.0	1.1	30.0
Thermal Coal (US\$/t)	61.80	weekly data	-0.6	-25.4	-2.0
Energy					
Brent Crude (US\$/bbl)	53	2.0	9.3	-9.5	19.3
Natural Gas (US\$/MMBtu)	3.43	2.6	16.9	26.6	45.1
Uranium (US\$/lb)	22.80	0.0	-11.3	-38.8	-34.3
Softs					
Wheat (US\$/bu)	404	2.3	0.1	-26.4	-20.4
Sugar (US\$/lb)	23	-1.2	11.8	62.0	53.2
Corn (US\$/bu)	343	1.0	0.7	-15.8	-10.4
Soy (US\$/bu)	955	-0.2	-2.6	6.6	8.1
Cotton (US\$/lb)	67	0.6	-2.2	9.3	6.4
Other					
CRB Comdty Index	402	0.0	-1.2	0.5	7.2

Tuesday 11 October 2016



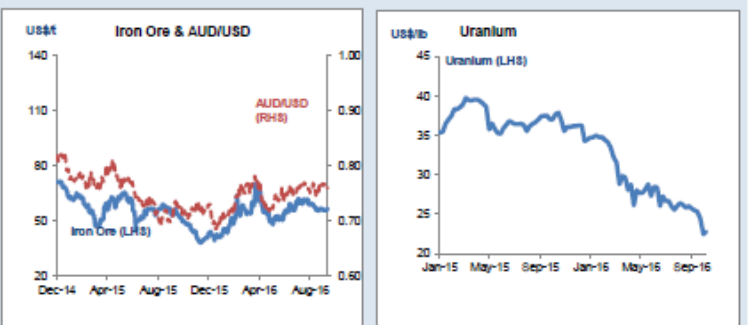
Global resource share price movement

Company Name	Sector	1D %ch	1M %ch	1Y %ch	YTD %ch
Barrick Gold	Gold	-1.0	-11.1	104.7	111.1
Newmont	Gold	0.3	-13.3	79.9	89.3
Goldcorp	Gold	0.4	-11.1	-2.1	22.5
Anglo Platinum	Platinum	-0.3	-17.0	21.9	84.8
Anglo American	Diversified	2.1	23.1	43.5	248.1
BHP Billiton PLC	Diversified	2.8	12.6	-8.6	31.0
Rio Tinto PLC	Diversified	2.1	16.3	5.1	38.0
Teck Resources	Diversified	2.4	10.1	141.3	335.2
Glencore	Diversified	2.0	23.3	76.6	152.0
Vale	Iron Ore	6.0	17.3	4.5	65.8
Fortescue	Iron Ore	1.8	1.6	120.6	169.0
South32	Diversified	-0.4	9.5	56.6	127.2
China Shenhua	Coal	0.6	7.8	14.7	30.9
Freeport McMoRan	Copper	0.6	-0.8	-24.5	50.5
Antofagasta	Copper	1.6	11.8	-6.2	19.1
Alcoa	Aluminium	0.4	9.4	2.4	6.4
Chinalco	Aluminium	1.0	0.7	6.0	16.0
Rusal	Aluminium	-1.1	-4.8	-16.6	16.5
Norilsk Nickel	Nickel	-0.2	-1.5	-0.2	22.1
Timah PT	Tin	0.0	-0.6	12.0	57.4
Boliden	Zinc	1.0	15.9	32.8	47.3
Cameco	Uranium	-1.5	-11.2	-42.9	-38.7
Arcelor Mittal	Steel	3.0	7.9	25.9	92.6



Commodity currency exchange rates (note: red = weakness against US\$)

Cross-rate	Spot	1D %ch	1M %ch	1Y %ch	YTD %ch
AUD/USD	0.76	0.3	0.5	3.3	4.4
USD/ZAR	13.81	0.5	3.0	-3.5	12.0
USD/BRL	3.20	0.6	1.4	17.5	23.7
USD/CAD	1.32	0.9	-1.0	-1.3	5.1
USD/RUB	61.99	0.5	4.2	0.0	17.0
USD/CNY	6.71	-0.5	-0.4	-5.7	-3.2



LME warehouse inventories

Commodity	Tonnes	1D %ch	1M %ch	1Y %ch	YTD %ch
Copper	350,875	-1.3	0.0	14.9	48.4
Aluminium	2,120,125	-0.3	-3.5	-32.3	-26.8
Lead	190,700	-0.1	1.5	21.8	-0.5
Zinc	457,275	0.0	1.9	-22.1	-1.5
Tin	3,420	-0.7	-20.3	-25.7	-44.3
Nickel	360,828	0.2	-1.9	-18.3	-18.2