

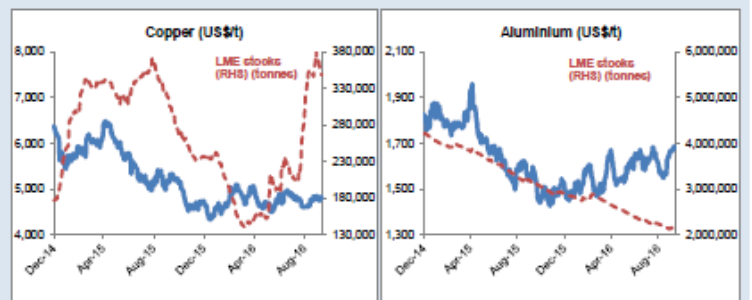
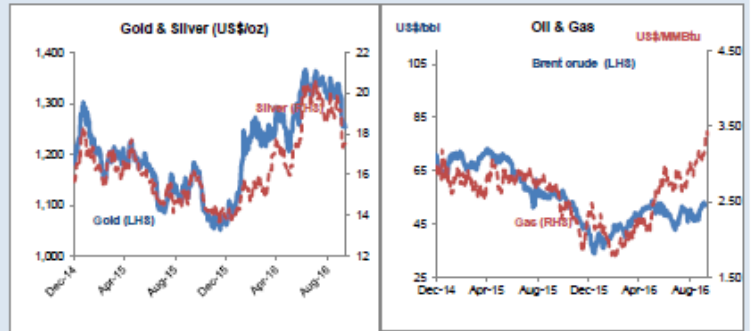


Daily Resources Overview

Commodity price movement

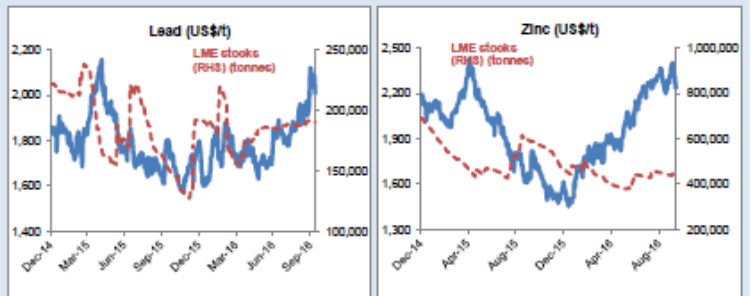
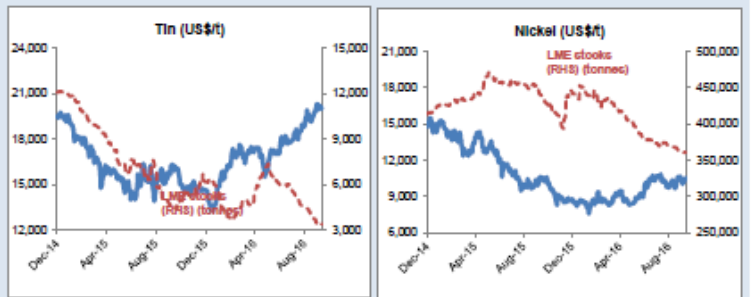
Commodity	Price	1D %ch	1M %ch	1Y %ch	YTD %ch
Precious Metals (COMEX)					
Gold (US\$/oz)	1,256	0.0	-5.1	7.9	18.5
Silver (US\$/oz)	17.54	0.1	-8.4	10.6	28.4
Platinum (US\$/oz)	946	-0.4	-10.7	-5.4	5.6
Industrial Metals (LME)					
Copper (US\$/t)	4,791	0.0	3.5	-10.1	1.8
Aluminium (US\$/t)	1,881	0.3	8.5	6.6	12.0
Lead (US\$/t)	2,007	-1.2	7.2	11.5	11.7
Zinc (US\$/t)	2,250	0.7	-0.1	23.6	41.3
Tin (US\$/t)	19,853	0.0	4.1	24.8	36.2
Nickel (US\$/t)	10,521	1.4	4.9	-0.9	19.8
Bulks					
Iron Ore (US\$/t)	57.16	-0.9	-1.1	1.0	31.2
Thermal Coal (US\$/t)	61.80	weekly data	-0.6	-25.4	-2.0
Energy					
Brent Crude (US\$/bbl)	52	-1.1	6.1	-8.2	16.7
Natural Gas (US\$/MMBtu)	3.39	-0.2	12.4	24.2	43.3
Uranium (US\$/lb)	22.80	0.0	-10.4	-39.4	-34.3
Softs					
Wheat (US\$/bu)	397	-2.6	-3.1	-27.4	-21.8
Sugar (US\$/lb)	23	-0.6	11.0	61.3	53.3
Corn (US\$/bu)	337	-2.5	-0.7	-17.1	-12.0
Soy (US\$/bu)	946	-0.9	-1.9	5.6	7.1
Cotton (US\$/lb)	69	2.7	3.0	11.8	9.0
Other					
CRB Comdty Index	401	-0.3	-0.8	1.8	7.1

Thursday 13 October 2016



Global resource share price movement

Company Name	Sector	1D %ch	1M %ch	1Y %ch	YTD %ch
Barrick Gold	Gold	2.0	-10.9	113.6	114.5
Newmont	Gold	2.0	-14.5	87.1	91.9
Goldcorp	Gold	2.5	-12.7	2.0	24.0
Anglo Platinum	Platinum	1.4	-15.0	25.7	86.0
Anglo American	Diversified	0.9	27.0	50.4	247.5
BHP Billiton PLC	Diversified	0.0	17.2	-5.5	31.2
Rio Tinto PLC	Diversified	1.0	18.0	6.7	36.8
Teck Resources	Diversified	1.9	13.7	156.9	363.3
Glencore	Diversified	6.4	30.6	95.0	161.1
Vale	Iron Ore	-1.8	12.4	2.6	62.8
Fortescue	Iron Ore	-2.9	6.1	129.7	169.0
South32	Diversified	-1.6	17.5	64.9	133.8
China Shenhua	Coal	-1.5	7.9	11.0	27.3
Freeport McMoRan	Copper	1.8	-9.3	-22.3	48.4
Antofagasta	Copper	-0.1	13.6	-3.5	18.6
Alcoa	Aluminium	-2.9	-7.6	-10.4	-8.4
Chinalco	Aluminium	0.0	4.3	0.3	12.8
Rusal	Aluminium	-1.8	-4.3	-18.2	13.9
Norilsk Nickel	Nickel	-0.5	-0.1	-1.1	21.4
Timah PT	Tin	0.0	5.9	13.4	59.4
Boliden	Zinc	1.9	15.9	34.8	47.1
Cameco	Uranium	-2.3	-12.7	-43.9	-39.8
Arcelor Mittal	Steel	1.0	9.9	29.0	90.7



Commodity currency exchange rates (note: red = weakness against US\$)

Cross-rate	Spot	1D %ch	1M %ch	1Y %ch	YTD %ch
AUD/USD	0.76	0.4	0.0	2.8	3.8
USD/ZAR	14.23	1.0	0.0	-6.3	8.7
USD/BRL	3.20	0.3	1.6	17.8	24.0
USD/CAD	1.33	0.0	-1.7	-2.0	4.4
USD/RUB	62.95	-0.4	2.6	-1.5	15.2
USD/CNY	6.72	0.0	-0.6	-5.9	-3.4

LME warehouse inventories

Commodity	Tonnes	1D %ch	1M %ch	1Y %ch	YTD %ch
Copper	347,850	-0.4	-1.8	14.7	47.3
Aluminium	2,109,425	-0.3	-3.7	-32.5	-27.1
Lead	189,950	-0.4	1.1	22.3	-0.9
Zinc	456,800	-0.1	2.0	-22.6	-1.6
Tin	3,370	-0.9	-20.0	-26.4	-45.1
Nickel	360,540	-0.1	-2.0	-18.0	-18.3

