

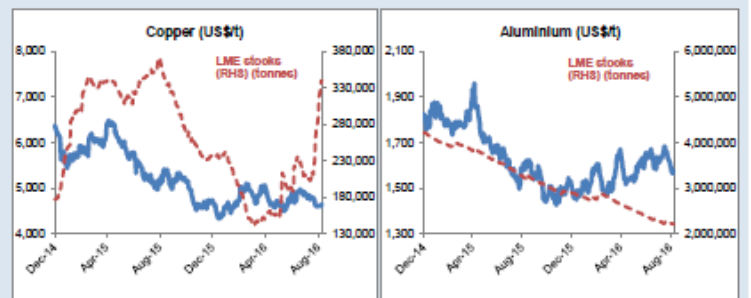
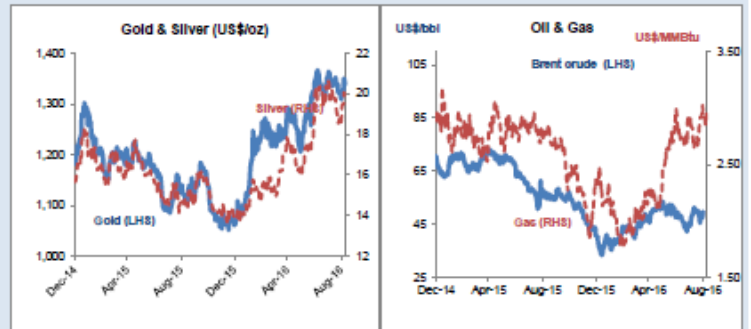


## Daily Resources Overview

### Commodity price movement

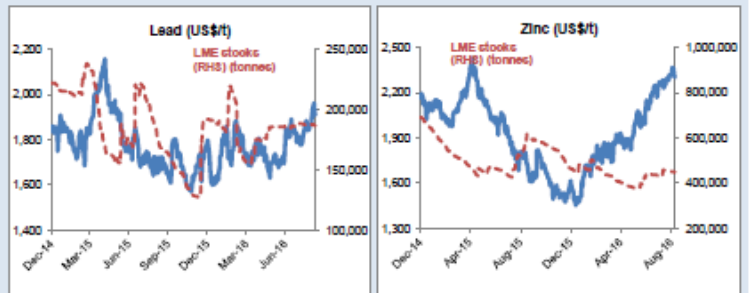
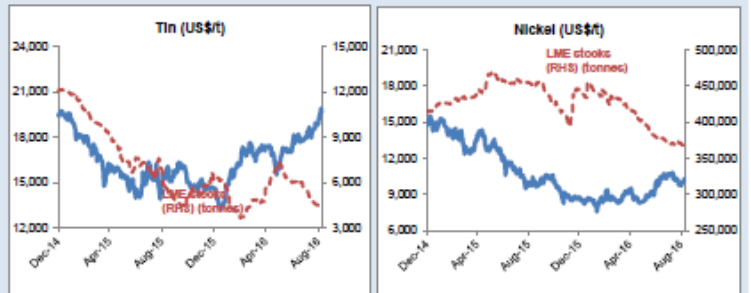
Commodity	Price	1D %ch	1M %ch	1Y %ch	YTD %ch
<b>Precious Metals (COMEX)</b>					
Gold (US\$/oz)	1,267	-0.5	-5.2	8.9	19.9
Silver (US\$/oz)	17.63	-0.9	-9.4	11.2	27.2
Platinum (US\$/oz)	963	-0.2	-7.4	-3.3	7.8
<b>Industrial Metals (LME)</b>					
Copper (US\$/t)	4,733	0.2	-1.8	-9.0	0.6
Aluminium (US\$/t)	1,672	0.6	1.5	15.9	11.4
Lead (US\$/t)	2,034	-0.2	5.0	16.8	13.2
Zinc (US\$/t)	2,329	-1.1	2.1	35.4	48.2
Tin (US\$/t)	20,665	0.6	3.5	31.8	40.3
Nickel (US\$/t)	10,224	0.3	-2.5	-2.0	16.4
<b>Bulks</b>					
Iron Ore (US\$/t)	63.07	1.8	11.1	23.6	44.8
Thermal Coal (US\$/t)	61.80	weekly data	-0.6	-25.4	-2.0
<b>Energy</b>					
Brent Crude (US\$/bbl)	50	-1.7	4.2	-8.7	12.5
Natural Gas (US\$/MMBtu)	3.00	-2.3	-3.5	29.3	27.0
Uranium (US\$/lb)	20.05	0.0	-18.0	-45.7	-42.2
<b>Softs</b>					
Wheat (US\$/bu)	412	1.8	3.9	-24.3	-18.9
Sugar (US\$/lb)	23	-1.1	-1.9	57.1	50.1
Com (US\$/bu)	354	1.4	7.6	-13.2	-7.6
Soy (US\$/bu)	1,021	1.9	7.3	14.5	14.9
Cotton (US\$/lb)	69	1.1	0.1	11.5	9.5
<b>Other</b>					
CRB Comdty Index	401	0.4	-0.5	1.3	7.1

Thursday 27 October 2016



### Global resource share price movement

Company Name	Sector	1D %ch	1M %ch	1Y %ch	YTD %ch
Barrick Gold	Gold	-1.4	-7.1	122.0	125.6
Newmont	Gold	-1.1	-7.8	92.4	101.1
Goldcorp	Gold	-1.7	-8.8	2.4	32.5
Anglo Platinum	Platinum	-1.8	-11.3	26.1	79.2
Anglo American	Diversified	-2.0	17.3	84.8	264.7
BHP Billiton PLC	Diversified	-1.7	6.2	-6.2	27.9
Rio Tinto PLC	Diversified	-0.2	12.4	12.2	41.0
Teck Resources	Diversified	0.0	15.0	224.6	427.0
Glencore	Diversified	-2.2	14.8	107.7	166.2
Vale	Iron Ore	1.9	37.0	44.9	102.9
Fortescue	Iron Ore	0.9	12.5	135.6	193.6
South32	Diversified	-1.1	9.2	75.8	145.1
China Shenhua	Coal	-1.6	8.3	22.3	35.3
Freeport McMoRan	Copper	0.3	0.7	-12.0	56.3
Antofagasta	Copper	-3.2	3.2	-7.8	11.4
Alcoa	Aluminium	1.8	-4.3	5.6	-8.1
Chinalco	Aluminium	2.4	5.0	11.7	14.8
Rusal	Aluminium	0.0	-1.2	-17.8	7.2
Norilsk Nickel	Nickel	-0.5	-1.9	-1.1	20.6
Timah PT	Tin	3.2	-3.6	22.0	59.4
Boliden	Zinc	-0.5	6.7	25.3	43.9
Cameco	Uranium	1.0	-7.9	-42.8	-37.8
Arcelor Mittal	Steel	-1.6	14.2	49.3	104.8



### Commodity currency exchange rates (note: red = weakness against US\$)

Cross-rate	Spot	1D %ch	1M %ch	1Y %ch	YTD %ch
AUD/USD	0.76	0.0	0.2	5.5	5.0
USD/ZAR	13.89	-0.9	-1.5	-1.8	11.4
USD/BRL	3.14	-0.9	3.2	24.4	26.1
USD/CAD	1.34	-0.2	-1.1	-1.6	3.5
USD/RUB	62.92	-1.3	1.7	0.1	15.3
USD/CNY	6.77	0.1	-1.5	-6.2	-4.1

### LME warehouse inventories

Commodity	Tonnes	1D %ch	1M %ch	1Y %ch	YTD %ch
Copper	336,225	-0.8	-7.7	21.0	42.3
Aluminium	2,153,400	-0.3	0.8	-29.9	-25.6
Lead	188,450	-0.1	-1.5	27.1	-1.7
Zinc	451,950	-0.2	2.3	-21.8	-2.7
Tin	2,930	-0.2	-21.1	-35.5	-52.3
Nickel	362,484	0.0	0.0	-15.4	-17.9

