

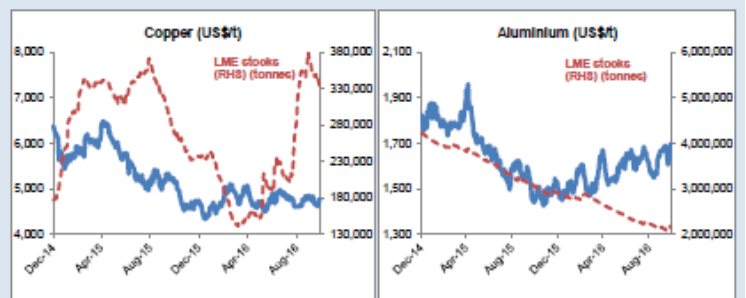
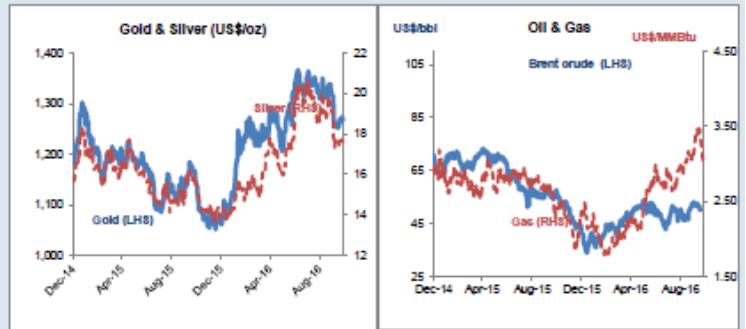


Daily Resources Overview

Commodity price movement

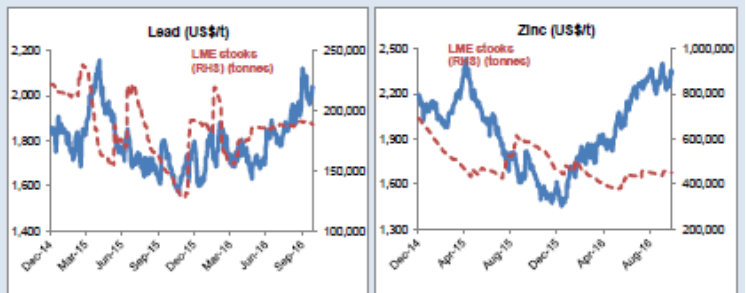
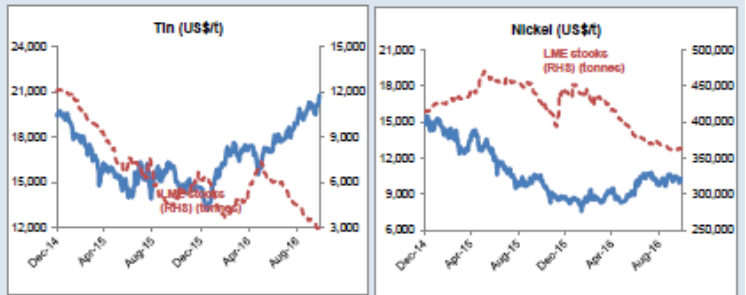
Commodity	Price	1D %ch	1M %ch	1Y %ch	YTD %ch
Precious Metals (COMEX)					
Gold (US\$/oz)	1,270	0.2	-4.6	8.6	19.5
Silver (US\$/oz)	17.83	0.0	-7.9	11.0	27.3
Platinum (US\$/oz)	965	0.1	-6.0	-2.3	8.0
Industrial Metals (LME)					
Copper (US\$/t)	4,782	1.0	0.3	-8.6	1.6
Aluminium (US\$/t)	1,896	1.5	3.6	17.7	13.0
Lead (US\$/t)	2,033	0.0	3.5	17.2	13.1
Zinc (US\$/t)	2,356	1.2	1.8	36.9	47.9
Tin (US\$/t)	20,595	-0.2	3.2	32.3	40.0
Nickel (US\$/t)	10,330	1.0	-2.4	-2.1	17.7
Bulks					
Iron Ore (US\$/t)	63.04	-0.1	11.3	22.4	44.7
Thermal Coal (US\$/t)	61.80	weekly data	-0.6	-25.4	-2.0
Energy					
Brent Crude (US\$/bbl)	50	0.8	8.3	-6.8	13.5
Natural Gas (US\$/MMBtu)	3.03	0.9	-2.0	30.0	28.2
Uranium (US\$/lb)	19.75	-1.5	-15.2	-46.0	-43.1
Softs					
Wheat (US\$/bu)	415	0.7	2.6	-23.3	-18.3
Sugar (US\$/lb)	23	-0.4	-3.6	57.3	49.6
Corn (US\$/bu)	358	1.0	7.8	-11.9	-6.7
Soy (US\$/bu)	1,025	0.4	6.9	14.3	15.4
Cotton (US\$/lb)	70	0.7	0.5	11.9	10.2
Other					
CRB Comdty Index	403	0.3	0.4	1.8	7.5

Friday 28 October 2016



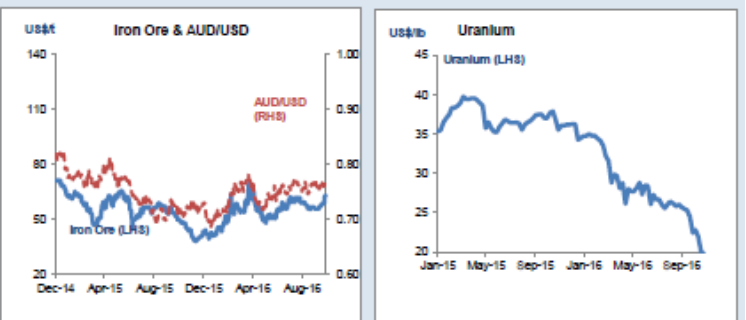
Global resource share price movement

Company Name	Sector	1D %ch	1M %ch	1Y %ch	YTD %ch
Barrick Gold	Gold	1.2	-4.3	123.2	128.3
Newmont	Gold	-3.8	-9.6	85.3	93.4
Goldcorp	Gold	-3.7	-9.3	-1.7	27.7
Anglo Platinum	Platinum	-0.8	-11.1	27.1	77.8
Anglo American	Diversified	0.9	20.2	97.7	268.0
BHP Billiton PLC	Diversified	-1.0	5.4	-5.2	26.3
Rio Tinto PLC	Diversified	0.2	13.7	15.0	41.3
Teck Resources	Diversified	-0.7	15.6	247.1	423.2
Glencore	Diversified	1.1	16.9	117.2	189.0
Vale	Iron Ore	-0.4	35.9	48.2	102.1
Fortescue	Iron Ore	-2.7	8.5	137.3	185.6
South32	Diversified	-8.0	0.8	58.9	125.4
China Shenhua	Coal	-2.1	6.0	23.2	32.5
Freeport McMoRan	Copper	1.0	4.7	-7.9	57.9
Antofagasta	Copper	0.4	4.8	-3.6	11.9
Alcoa	Aluminium	1.5	-2.5	7.8	-4.7
Chinalco	Aluminium	1.7	7.1	16.3	16.7
Rusal	Aluminium	1.2	2.0	-16.8	8.4
Norilsk Nickel	Nickel	0.2	-3.2	3.0	20.8
Timah PT	Tin	6.8	3.6	32.3	70.3
Boliden	Zinc	1.0	5.9	26.9	45.4
Cameco	Uranium	-0.2	-6.2	-42.5	-37.9
Arcelor Mittal	Steel	-0.9	15.4	56.3	103.0



Commodity currency exchange rates (note: red = weakness against US\$)

Cross-rate	Spot	1D %ch	1M %ch	1Y %ch	YTD %ch
AUD/USD	0.76	-0.8	-1.0	5.5	4.2
USD/ZAR	13.87	0.1	-3.0	-1.4	11.5
USD/BRL	3.17	-0.8	2.1	22.8	25.1
USD/CAD	1.34	-0.1	-1.4	-0.9	3.4
USD/RUB	62.72	0.2	1.5	3.9	15.6
USD/CNY	6.78	-0.2	-1.7	-6.4	-4.3



LME warehouse inventories

Commodity	Tonnes	1D %ch	1M %ch	1Y %ch	YTD %ch
Copper	331,450	-1.4	-10.8	20.9	40.3
Aluminium	2,148,350	-0.2	1.1	-29.9	-25.8
Lead	188,300	-0.1	-1.5	27.3	-1.7
Zinc	451,600	-0.1	2.3	-21.7	-2.8
Tin	2,905	-0.9	-20.4	-35.6	-52.7
Nickel	362,250	-0.1	0.1	-15.4	-17.9