

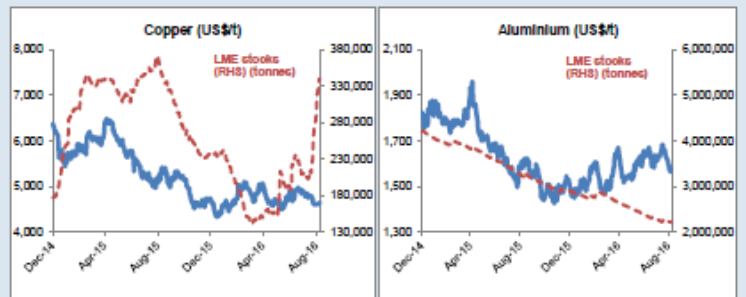
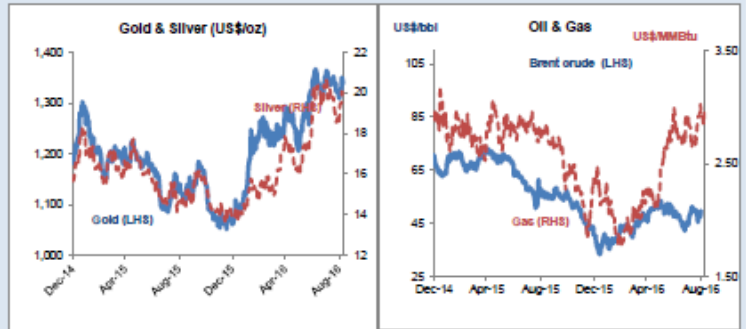


Daily Resources Overview

Tuesday 01 November 2016

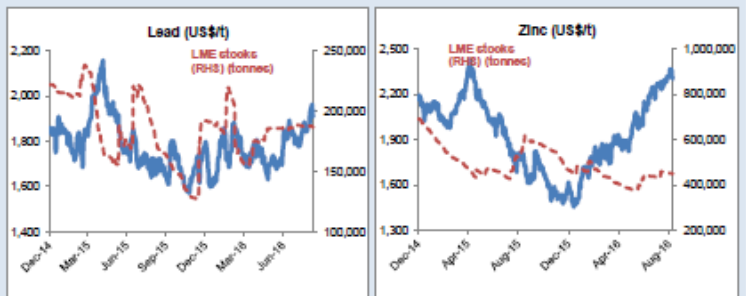
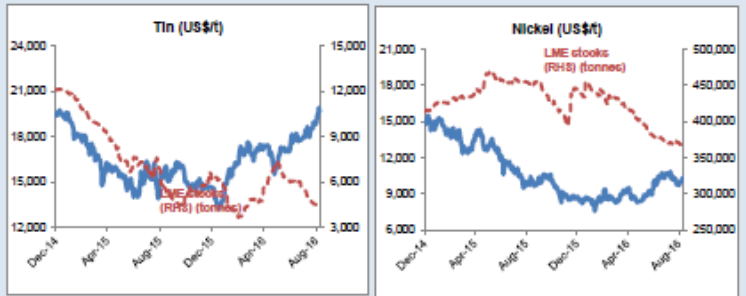
Commodity price movement

Commodity	Price	1D %ch	1M %ch	1Y %ch	YTD %ch
Precious Metals (COMEX)					
Gold (US\$/oz)	1,279	0.1	-3.8	11.4	20.0
Silver (US\$/oz)	17.91	0.6	-6.7	15.1	29.2
Platinum (US\$/oz)	982	0.0	-4.4	-0.5	9.8
Industrial Metals (LME)					
Copper (US\$/t)	4,841	0.2	-0.1	-5.6	2.9
Aluminium (US\$/t)	1,734	0.9	4.2	19.8	15.6
Lead (US\$/t)	2,049	-0.1	-3.4	22.0	14.0
Zinc (US\$/t)	2,454	2.6	3.2	45.3	54.0
Tin (US\$/t)	20,885	0.2	3.4	38.0	42.2
Nickel (US\$/t)	10,437	0.4	-0.9	3.9	18.9
Bulks					
Iron Ore (US\$/t)	64.38	0.7	15.3	29.2	47.8
Coking Coal (US\$/t)	257.70	0.3	20.8	231.7	229.5
Energy					
Brent Crude (US\$/bbl)	48	-4.3	-4.5	-15.0	7.9
Natural Gas (US\$/MMBtu)	3.11	-3.6	0.3	28.1	31.5
Uranium (US\$/lb)	19.70	-0.3	-16.3	-44.9	-43.2
Softs					
Wheat (US\$/bu)	416	1.9	3.5	-24.1	-18.0
Sugar (US\$/lb)	22	-2.7	-6.2	50.4	42.8
Com (US\$/bu)	355	-0.1	5.3	-13.1	-7.4
Soy (US\$/bu)	1,012	0.0	5.5	13.0	13.9
Cotton (US\$/lb)	69	-2.8	0.8	8.7	8.8
Other					
CRB Comdty Index	403	0.1	0.4	2.1	7.7



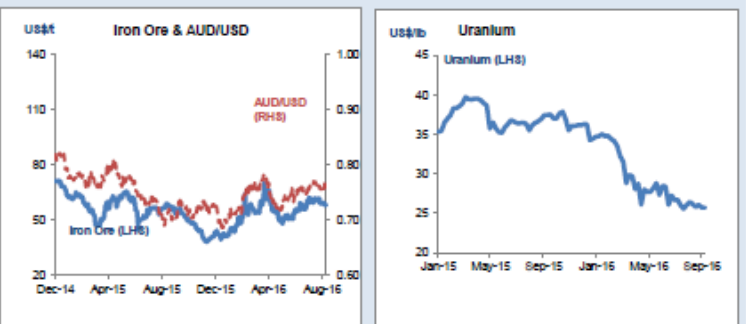
Global resource share price movement

Company Name	Sector	1D %ch	1M %ch	1Y %ch	YTD %ch
Barrick Gold	Gold	3.0	-0.7	128.7	138.3
Newmont	Gold	4.7	-5.7	90.3	105.9
Goldcorp	Gold	2.6	-8.0	18.6	31.5
Anglo Platinum	Platinum	-3.4	-17.8	30.9	71.4
Anglo American	Diversified	2.9	16.9	106.9	277.7
BHP Billiton PLC	Diversified	0.1	3.1	0.2	29.2
Rio Tinto PLC	Diversified	0.3	10.3	20.4	43.4
Teck Resources	Diversified	2.7	22.5	278.1	442.3
Glencore	Diversified	2.2	17.8	122.2	176.3
Vale	Iron Ore	-0.7	34.0	47.0	101.3
Fortescue	Iron Ore	-0.2	11.1	163.2	194.1
South32	Diversified	1.6	6.6	75.4	141.3
China Shenhua	Coal	-0.6	6.5	23.0	32.5
Freeport McMoRan	Copper	2.3	2.9	-5.0	65.1
Antofagasta	Copper	2.3	3.6	3.1	15.7
Alcoa	Aluminium	1.2	-5.6	7.2	-3.0
Chinalco	Aluminium	-1.0	2.5	14.7	12.1
Rusal	Aluminium	0.7	11.7	-7.4	16.5
Norilsk Nickel	Nickel	-0.5	-5.6	1.5	19.1
Timah PT	Tin	5.1	14.1	48.8	84.2
Boliden	Zinc	0.0	3.8	27.9	46.5
Cameco	Uranium	-2.7	-7.9	-44.2	-39.5
Arcelor Mittal	Steel	0.4	12.7	56.0	103.1



Commodity currency exchange rates (note: red = weakness against US\$)

Cross-rate	Spot	1D %ch	1M %ch	1Y %ch	YTD %ch
AUD/USD	0.76	0.1	-0.7	6.5	4.4
USD/ZAR	13.48	2.7	1.8	2.3	14.8
USD/BRL	3.19	0.2	2.2	20.7	24.0
USD/CAD	1.34	-0.1	-2.1	-2.4	3.2
USD/RUB	63.32	-0.7	-0.7	0.5	14.5
USD/CNY	6.78	0.0	-1.5	-6.5	-4.2



LME warehouse inventories

Commodity	Tonnes	1D %ch	1M %ch	1Y %ch	YTD %ch
Copper	320,825	-1.7	-13.8	19.8	35.8
Aluminium	2,141,300	-0.1	0.8	-29.7	-26.0
Lead	188,700	-0.2	-0.9	27.9	-1.5
Zinc	450,800	-0.1	2.6	-21.1	-2.9
Tin	2,895	0.0	-16.3	-42.0	-52.9
Nickel	363,558	0.5	0.5	-14.7	-17.6